

# CTS-800

Palm-size veterinary ultrasound

Compact design & easy operation

Water proof for outdoor operation

Gravity sensor for layout change

Livestock pregnancy detection



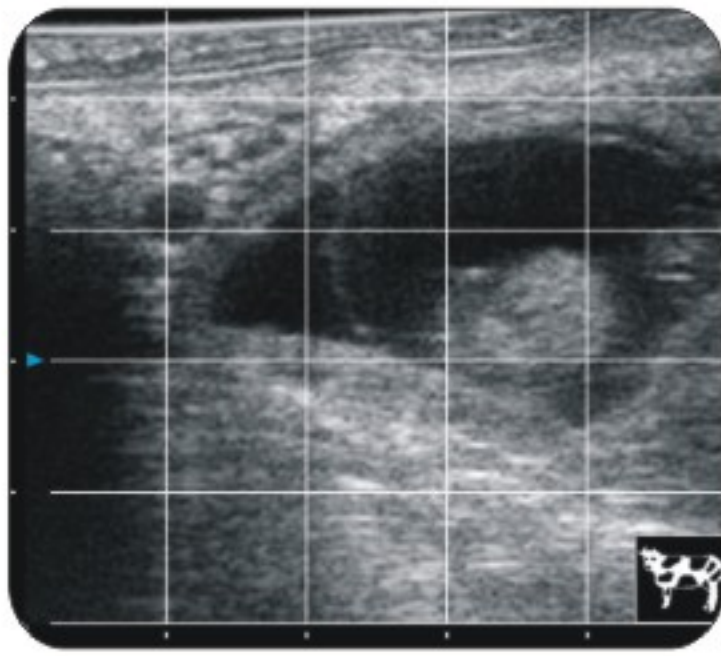
See the future  
**SIUI**





# CTS-800

Palm-size veterinary ultrasound



Grid for Estimation



Different Layout

## Specifications:

- Monitor: 7-inch WVGA LCD monitor
- Weight: 0.8 kg
- Environmental rating: IP54 (main unit) IP67 (probe head)
- Battery: 3 hours operating time
- Display mode: B, 2B, ZOOM B, B/M, M
- Depth: Max to 250mm
- B gain: 0~100
- Image storage: 256 frames
- Cine loop: 256 frames
- Image Layout: Gravity sensor for layout change (transverse/vertical)
- Measurement: Distance, area, circumference, volume, angle, heart rate
- Probe: L50/7.5 MHz linear rectal probe (Standard)  
L65/5.0 MHz linear rectal probe (Optional)  
R20/5.0 MHz micro convex probe (Optional)

## Main features:

### Compact Design

Only with a belt, you can free the ultrasound system from a still trolley or table. Tie the ultrasound system into your body and operate it at any position as you like.

### Gravity Sensor

You can operate the ultrasound system either in transversal layout or vertical layout. It can automatically adapt to two different layouts when you rotate it.

### Grid for estimation

With grid on the image area, you can easily estimate the size of the target substance like follicle, fertilized egg, etc.



# SIUI

Shantou Institute of Ultrasonic Instruments Co., Ltd.

Add: #77, Jinsha Road, Shantou 515041, Guangdong, China

Tel: +86-754-88250150 Fax: +86-754-88251499

E-mail: [siui@siui.com](mailto:siui@siui.com) Website: <http://www.siui.com>

Specifications and appearance are subject to change without prior notice.

DCY2.782.EN.CTS-800.CY/7B02